

IP Camera CMS user manual

Version: 2.0

Date: July. 2014

This document is applicable to all series devices in our company.

foreword

The CMS of IP Camera is used to realize all front-end network video monitoring devices(including network video server, IP camera) centralized monitoring, storage, management and control. The management software can manage Max 96 front-end network monitoring devices; can set and control any device, and other functions; can support 1/4/6/8/9/16/25/36 pictures display on one screen, and two-way voice talk back, logs retrieval, and other functions. With powerful function, friendly interface, and simple operation, it is convenient for users to realize networking applications for large-scale remote network monitoring system.

Statement

1. The contents described in this manual may exits some difference with the vesion you are using. If you have some questions can not be solved, please contact our technical support department or products supplier.
2. The contents in this manual will update irregularly, our company reserves the rights without prior notice.

content

1. Installtion instructions.....	5
1.1. Installation requirements	5
1.2. Installation step	5
2. CMS detailed instruction.....	6
2.1. log in and instruction	6
2.2. software interface instruction	7
2.3. Device management	10
2.3.1. Add device.....	10
2.3.2. Group management.....	12
2.4. Image preview	14
2.4.1. non cycle switching preview.....	15
2.4.2. cycle switching preview.....	17
2.5. PTZ Control.....	18
2.5.1. PTZ Control	18
2.5.2. Preset setting.....	19
2.5.3. Cruise setting.....	20
2.5.4. Image Color setting	21
2.6. Record management.....	21
2.6.1. plan of record	21
2.6.2. Alarm record.....	23
2.6.3. Manual record	23
2.7. Linkage alarm	24
2.7.1. Enable the linkage alarm	24
2.7.2. Alarm type.....	24
2.7.3. Linkage Alarm.....	25
2.8. Local playback	25
2.8.1. playback by time searching	25

2.8.2. Playback by searching file.....	27
2.9. Remote playback.....	27
2.9.1. Remote playback plan of record.....	27
2.9.2. SD card record playback.....	29
2.10. Electronic Map	30
2.10.1. Add Map.....	30
2.10.2. Edit Map	30
2.10.3. Delete Map.....	30
2.11. Parameter settings	31
2.11.1. Color.....	31
2.11.2. Video.....	32
2.11.3. Audio.....	32
2.11.4. OSD.....	32
2.11.5. Network	33
2.11.6. Motion Detection.....	33
2.11.7. PTZ.....	34
2.11.8. System.....	34
2.11.9. WIFI.....	35
2.12. User management.....	35
2.12.1. Add User.....	36
2.12.2. Delete User.....	36
2.12.3. Modify user permissions.....	36
2.12.4. Modify user password.....	37
2.13. Logs.....	37
2.13.1. Log retention time.....	37
2.13.2. Log query	37
2.13.3. Log backup	37
2.14. Other settings.....	38
2.15. Split screen.....	40

1. Installtion instructions

1.1. Installation requirements

Hardware enviroment:

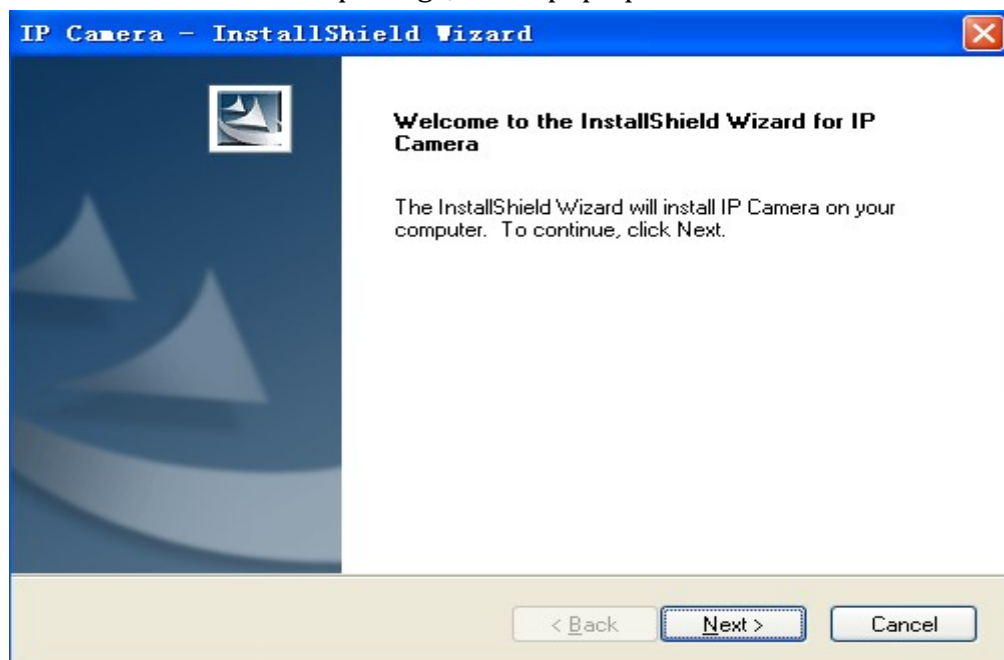
- 1、 Pentium IV series, CPU basic frenquency more than 2.0G
- 2、 more than 2G memory
- 3、 Hard disk 120G or higher
- 4、 display resolution 1024 x 768 or higher

Software environment:

Windows2000/Windows XP/Windows2003/Windows Vista/Windows 7,Windows2000/WindowsXP/Windows2003/Windows Vista/Windows 7/Windows8

1.2. Installation step

Double-click the installation package, it will pop up below interface:

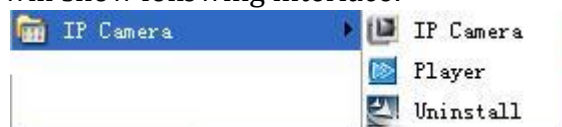


Select the installation path, click “Next”, then installation finished.

After installation, it will show below icon on desktop:

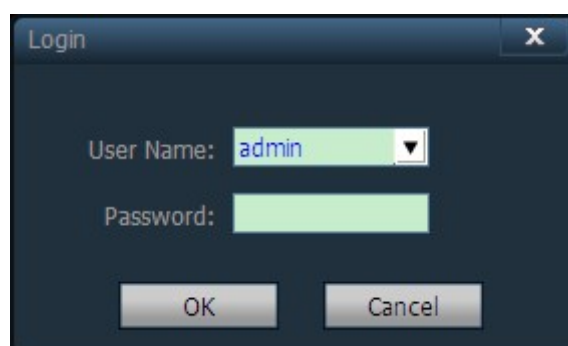


In the program bar will show following interface:



2. CMS detailed instruction

2.1. log in and instruction

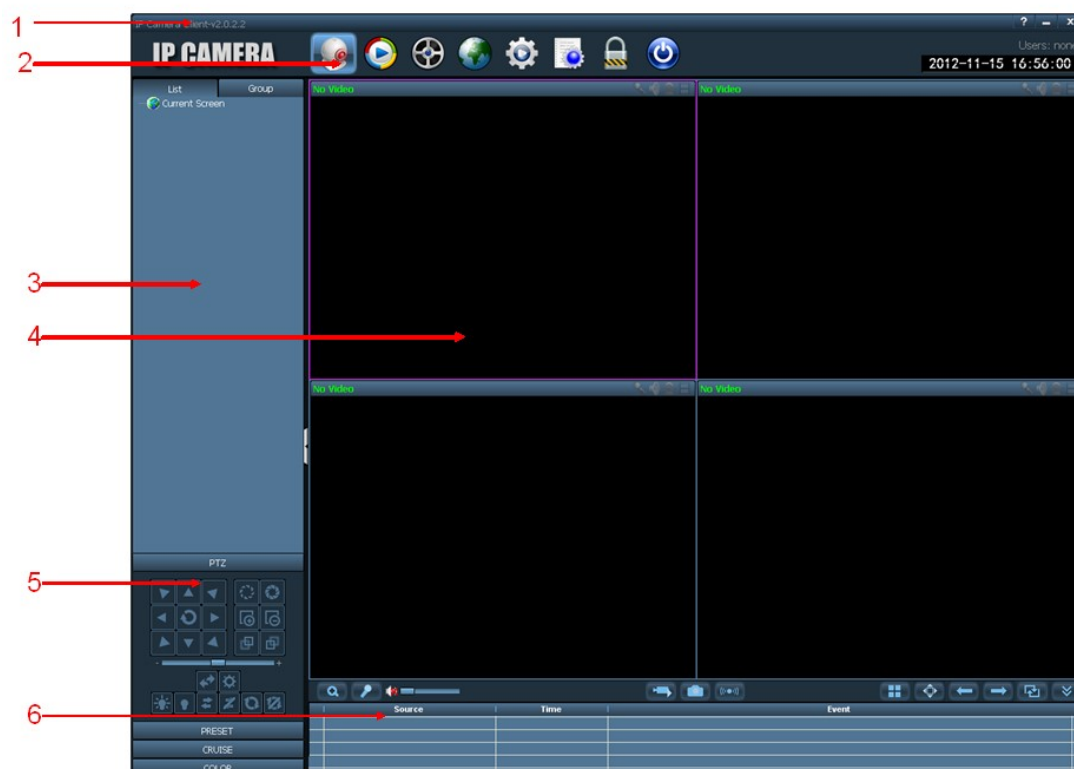


【Log in】 When log in, the default user name is admin and password is empty , click “OK”to enter into CMS Main interface.

【Exit】 Only the users with admin permissions can exit from CMS, user and guest can not exit from CMS.

When exit from CMS, you need to input the admin permissions’s user name and password.




2.2. software interface instruction




The software interface as shown in above, mainly divided to 6 sections:

- | | | | | | |
|---|-------------------|---|-------------|---|------------------------|
| 1 | System button bar | 2 | tab bar | 3 | device tree |
| 4 | real-time preview | 5 | PTZ control | 6 | Alarm information list |

◆System button bar

-  Help button, click it to open CMS instruction
-  Hidden button, click it then software hide into system tray
-  Exit button, click it then software pop up Exit reminder

◆Tab bar

-  Logo information
-  Click it then switch to image preview interface



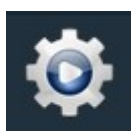
Click it then switch to recording playback interface



Click it then switch to remote recording playback interface



Click it then switch to map operation interface



Click it then switch to setting interface



Click it then switch to log operation interface



logout user and switch user



Click it then exit CMS

◆Device tree:

【List mode】 According to user configuration listing level to show area,setting,and channel

【Group mode】 According to user configuration grouping level to show group and channel

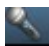
【Current screen】 show current connected device on screen, only shows in list mode

◆Real-time preview




electronic zoom button, click it and use mouse to draw a area on the screen, then area magnification can be realized




Voice talkback button, choose the window need to open talkback, then click talkback button, window statu bar will show , talkback can be realized, only can open talkback of one device at the same time.



voice monitoring button, click it to open voice monitoring, window statu bar will show , click it again to close voice monitoring, it can open voice monitoring of multiple devices at the same time.



recording button, choose the window need to recording, click recording button to open recording manually, window statu bar will show , click it again to close recording manually.



picture capture button, choose the window need to capture picture, click capture button to realize picture capture, if click capture button continuously, 1 second can capture 2 pictures at most.



Multi-image choosing button, click it to choose multi-image display, 1,4,6,8,9,16 image options.



Full screen display button, click it then real-time preview area will be full screen displaying.



Last group button, in Grouping cycle switching,click it then back to window display of last group



Next group button, in Grouping cycle switching, click it then skip to window display of next group



cycle switching button, click it to open grouping cycle switching, click again to stop grouping cycle switching.



voice broadcast button



Device tree shrink or extend button, click it that device tree shrink, click again then device tree extend



Alarm message list shrink or extend button, click it that alarm message list shrink, click again then alarm message list extend.

2.3. Device management

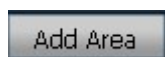
2.3.1. Add device

Before using the CMS, you need to add device and configuration. Click “setting” button in tab bar, enter into device management page.

【Add list tree】

- ◆ When run software initially, default list tree is empty. Click “add area”button, pop-up “add area”dialog box. After filling in name in area name column, click ok to add a area in list tree. Because of the added area is the first area, so this area do not exist belongs area, the area is empty.

Note: List tree can add Max 128 areas at present.



Add area into device tree



Modify the name of selected area



Delete the selected area



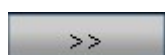
Add device manually, click it to pop up dialog box of add device



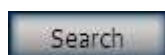
click it, then pop-up dialog box of editing device



Delete the selected device

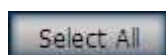


add the searched devices to selected area



click it to search the devices in LAN







choose all devices in searching list

【Add device】

◆ Search to add device in LAN:

Clicking search button, the CMS will search out all devices in LAN, then select the device needed to add in search list, and select area, click  button to add device, thus you can add selected device to this area.

◆ add device manually

Click  button, it will pop-up below dialog box of add device, as shown in below:



The image shows a dialog box titled "Add Device" with a close button (X) in the top right corner. It contains several input fields: "IP or Domain name" with the value "192.168.1.88", "Channel" with the value "1", "Name" (empty), "Port" with the value "80", "User Name" with the value "admin", "Password" with the value "*****", and "Area" with a dropdown menu showing "IPC". At the bottom right, there are "OK" and "Cancel" buttons.

【Name】 name of the device, it is user-defined. Max 15 chinese characters. (Note: After enter name, the device tree in preview window only display device name, don't display device IP Address.)

【channel】 When a device has multi channels, you can choose different channel. The device only have one channel at present, so no need to change channel number.

【IP or domain name】 IP address or domain of the device

【port】 http port of the device, default is 80

【User name】 login user name of the device, default is admin

【password】 login password of the device, default is admin

【Area】 displaying area of the device

After filling in all required information, click ok to finish device adding.

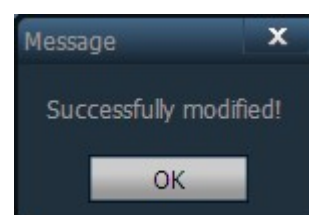
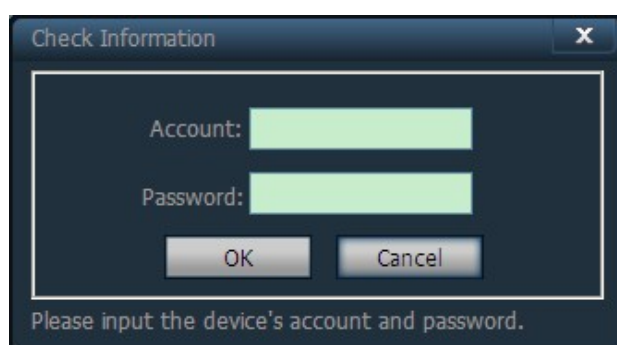
Note: If using manufacturer's DDNS, just input manufacturer's DDNS in IP or domain text box, using default port 80. You don't need to modify port number.

Modify IP Address of the device:

NO.	IP	Port	Version	Mac Address	Name
<input type="checkbox"/> 1	192.168.1.122	1220	V5.7.6.2.1-20140624	7C:DD:90:43:F0:7D	ty
<input type="checkbox"/> 2	192.168.1.134	80	V7.7.9.1.1-20140916	00:E0:F8:10:17:FB	IPCAM
<input type="checkbox"/> 3	192.168.1.139	80	V6.9.8.1.1-20140822	00:47:12:74:4C:D6	IPCAM
<input type="checkbox"/> 4	192.168.1.141	1173	V1.3.1.5	E8:AB:FA:19:90:2B	IP Camera
<input type="checkbox"/> 5	192.168.1.142	81	V6.4.8.1.1-20140911	00:F4:C9:A1:95:62	IPCAM
<input type="checkbox"/> 6	192.168.1.145	1149	V7.1.4.1.12-20140915	44:33:4C:2F:0F:0A	IPCAM
<input type="checkbox"/> 7	192.168.1.147	80	V6.9.4.1.1-20140903	00:CA:7B:5C:D2:21	IPCAM
<input type="checkbox"/> 8	192.168.1.148	2105	V6.1.4.1.1-20140424	00:15:FE:81:EA:AE	IPCAM
<input type="checkbox"/> 9	192.168.1.152	1140	V7.4.4.1.1-20140901	E8:AB:FA:16:AE:69	IPCAM

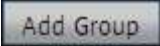
Clicking the "search" button, the CMS will search all devices in LAN automatically. Then select the corresponding device (the IP and other information of this device will in highlight status), and enter the new IP address, subnet mask, gateway, HTTP port and other information in corresponding text box, clicking "Setting" button, it will pop-up "check information" dialog box. Then input the user name and Password, and click "OK", it will prompt "success"

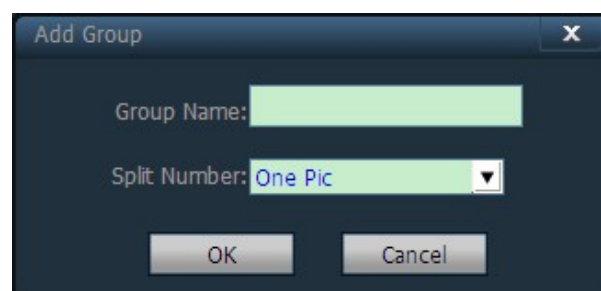
Note: The camera will restart after modified HTTP port.



2.3.2. Group management

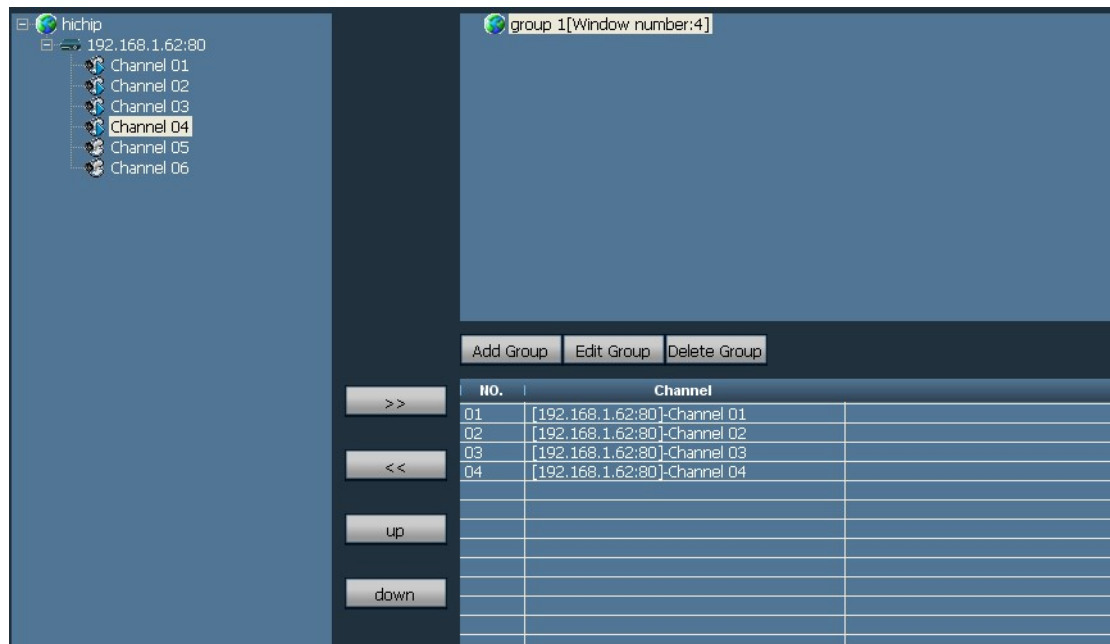
◆add group:

Select  button,
it will pop-up dialog box of add group,
then input name in grouping name, and click OK

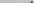


Note: It can add Max 20 names in grouping name.

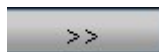
◆ configuration group:



After adding group, you can do group setting.

Group setting methods: select group, click UID of the device, then click  button to add device channel into group.

Note: Each group can set Max 16 pictures displaying.

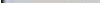


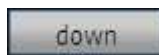
Add device into grouping channel

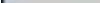


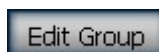
Remove device from grouping device channel



 Adjust device displaying sequence in grouping, the selected device and front device change position.



 Adjust device displaying sequence in grouping, the selected device and behind device change position.



Edit Group Modify the name of grouping and division, then the group will be empty, you need to reset group.

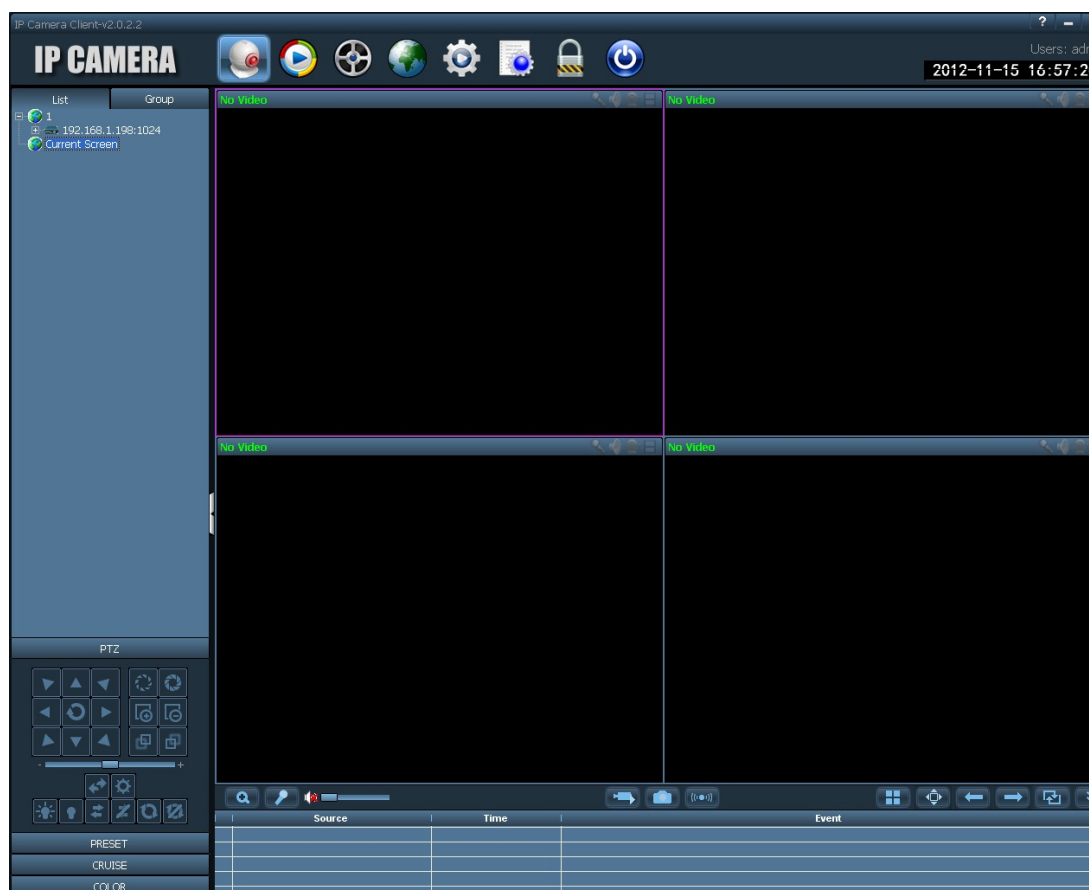


Delete group and devices in group

2.4. Image preview

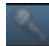

After configured device, clicking “preview” button in Tab bar, then back to main interface of monitoring, the default display way of device tree is list tree. You can switch displaying group and list information by clicking “group” and “list” in device tree. The default display images is 4 image segmentation, support Max 36 pictures.



When maximum image segmentation, it has 16/25/36 image mode optional. The higher the picture, the performance of host also need to be promoted. If 25 or 36 images displaying, we suggest use more than i3 CPU and independent video card.

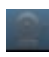



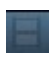

Display image instruction:

No Video: indicates this channel do not connect any device. If connected, OSD information will be displayed on device.

: talk back status, when the icon becomes , it means this channel is talk back, otherwise the channel do not open talk back.

: Listening status, when the icon becomes , it means this channel is listening, otherwise it does not open listening.



: Alarm status, when the icon becomes , it means this channel is alarm, otherwise it does not alarm.


: Recording status, when the icon becomes , it means it is recording, otherwise without record.

2.4.1. non cycle switching preview

In list mode, clicking the IP of the device or “+” in front of the name, double click Channel 01 or drag Channel 01 to windows, then it can display image.

After device connected, it will show a blue triangle

 on Channel 01; if shows , means device

do not connect. If shows , means it will have alarm message.

Right-click any area, it will pop-up the picture as shown on the right:

【Connected all】 Connect devices in selected area

【start manual record of area】 Open manual record in selected area

【Stop manual record of area】 Stop manual record in selected area

【Auto adjust all】 The device adjust image display ratio automatically in select area

【Full display all】 The device display images in select area as the size of segmentation picture



【Check time all】 The time of all device in selected area synchronize to PC time

Note: After connected device, it's not certain to display image on the window. If needed, please double click Channel 01 or drag Channel 01 to window.

Right-click
any device, it will pop-up the picture as shown
on the right:

【connected device】

all channel connected to selected device

【Disconnected device】 all channel disconnected to
selected device

【start manual record of device】 Open manual record for selected device

【Stop manual record of device】 Stop manual record for selected area

【main stream device】 Using main stream to connect selected device

【Sub stream device】 Using sub stream to connect selected device

【third stream device】 Using third stream to connect selected device

【 Auto adjust device 】 The selected device adjust image display ratio
automatically

【 Full display device 】 The selected device display image as the size of
segmentation picture

【check time device】 The time of selected device synchronize to PC time



Choose any device, click Channel 1,

it will pop-up the picture on the right:

【Disconnect】 Connect one channel of the
device, the device only have Channel 01 at present

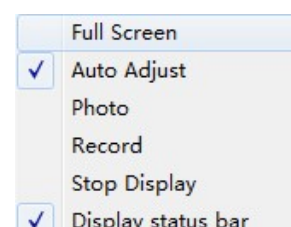
【start manual record】 Start manual record for
selected channel, after selected, the tag will
turn to stop manual record automatically



【Full display】 The selected device display image as the size of segmentation picture

【check time】 the time of selected channel synchronize to PC time

Click the window of Image preview, then pop-up the picture as shown on the right:



【Full screen】 After choosing full screen, the CMS will display full screen, if need a single window to display full screen, double click the corresponding window again.

【auto adjust】 Tick means the selected window display as image ratio, cancel the tick means display image as the size of picture segmentation

【photo】 Capture pictures from selected window and save to hard disk, the default picture format is JPG.

【Record】 Start manual record for selected window, after started record, the record tag will tick automatically

【Stop display】 Stop the image display in selected window

【Display status bar】 display the status of window, including: listening, talk back, alarm, record and so on.

Note: When images stop displaying, the device is still in connection status. If the device has started record function, it still keep recording after stop displaying.

2.4.2. cycle switching preview

When switching to group list, you can only use cycle switching way to display image. Before open cycle switching, you must set group

General Record Length:	5 Min	▼
Alarm Duration Time:	10 Sec	▼
Switch Interval:	10 Sec	▼
Pre-recorded alarm Length:	5 Sec	▼

first. Please check “device group” for

specific settings. Click  button to open

cycle switching, click again  to suspend it.

When using group cycle switching, if need to set cycle time, please modify in “setting”—“record management”, default is 10 seconds. The scope is 5s to 60s adjustable.

2.5. PTZ Control

2.5.1. PTZ Control

You can control PTZ of eight directions rotation by direction key, and choose PTZ rotate speed by drag slider, “-” means PTZ rotate speed slow down, “+” means PTZ rotate speed up.



Iris ehlarge button, need the lens of camera support



Iris shrink button, need the lens of camera support



Zoom in button, need the lens of camera support



Zoom out button, need the lens of camera support



Focus in button, need the lens of camera support



Focus out button, need the lens of camera support



Light on button, click it to open the light of camera, need camera support



Light off button, click it to close the light of camera, need camera support




Wiper on button, click it to open wiper function of camera, need camera support



Wiper off button, click it to close wiper function of camera, need camera support





start cruise button, click it to start camera's cruise function, only part of camera can support. It can adjust rotation speed (drag speed adjustment to corresponding position, then click )




stop cruise button, click it to stop camera's cruise function, only part of camera can support.



start horizontal scan range, drag speed strip to adjust rotation speed, need camera support



Call out PTZ control panel, click the image you previewing, click , then it can call out control panel. Please refer to chapter 2.5.5 of scan range.

2.5.2. Preset setting

The CMS can support Max 256 preset. Please refer to the preset quantity instruction that camera supported of how many preset can be used in the concrete.

【Preset setting】 Choose the window that need to set preset, then select preset number, click “preset” button, preset point set successfully.

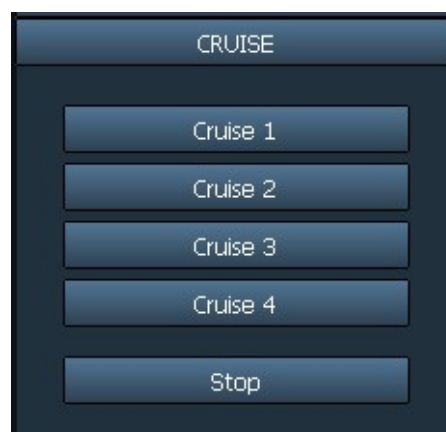
【call preset】 Choose the window that need to call preset, then select the preset number, click “call” button, before select call you must set preset firstly.

【delete preset】 Choose the window that need to delete preset, then select the preset, click “delete” button, thus preset deleted successfully.

PRESET		
NO.	PresetName	
001	Preset001	
002	Preset002	
003	Preset003	
004	Preset004	
005	Preset005	
006	Preset006	
007	Preset007	
008	Preset008	
009	Preset009	
010	Preset010	
		<div>Goto</div> <div>Set</div> <div>Del</div>

2.5.3. Cruise setting

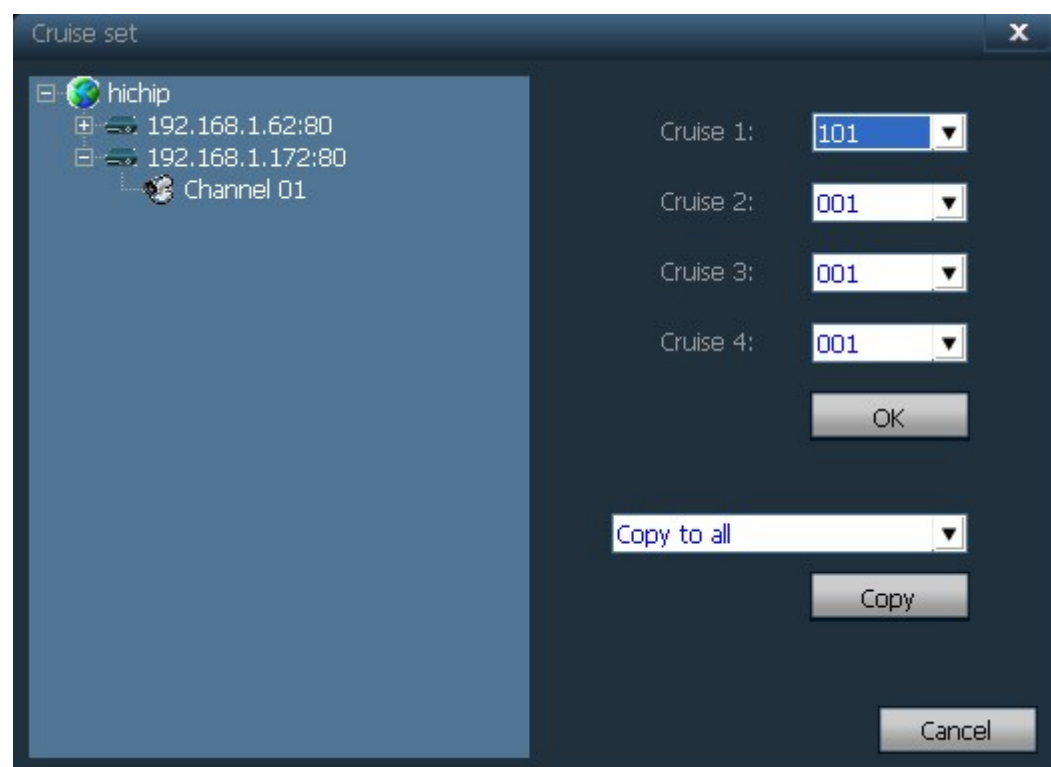
Note: Cruise function need PTZ supporting.
It can set maximum 4 groups preset cruise
(Setting as the PTZ instruction. Please
refer to the protocol in PTZ user manual
for detailed information)



Click "cruise" button, it display cruise control panel. Different PTZ calls different preset cruise. For example: PTZ call preset 101 to start cruise group 1. You can save the corresponding preset position of **【cruise 1】** button. If need to start the cruise, click **【cruise 1】**. Cruise button setting as below:

Cruise button setting:

Enter into "setting" -- "other settings"-- "cruise set". As shown in below:





After setting cruise button, the system will save the PTZ parameter of this channel.


Note: Preset 101 call cruise 1; preset 102 call cruise 2; and so on.


2.5.4. Image Color setting

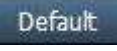
Click “color” button, it will display image color adjustment dialog box.


 Image brightness adjustment

 Image saturation adjustment

 Image contrast adjustment

 Image color adjustment

 Default Image color restore factory Settings



button, after clicking, the image color will restore to factory Settings.

2.6. Record management

2.6.1. plan of record

☒ Enable the plan of record

	0	1	2	3	4	5	6	7	8	9	10	11	12	13	14	15	16	17	18	19	20	21	22	23	
SUN																									
MON																									
TUE																									
WED																									
THU																									
FRI																									
SAT																									

In the tab bar to choose “setting”-- “record management”—“Enable the plan of record”, as shown in above:

SUN – SAT means one week,based on the count of day ; 0 – 23 means one day, based on the unit of half an hour.

【Enable the plan of record】 Choose channel, then click the left mouse to drag a green blocks in the schedule, as shown in above; green area is the time bucket that enabled plan of record. After setting time bucket, click save.

【close the plan of record】 Cancel the tick in enable plan of record, click save; or cancel green block in schedule and click save. The method of cancel green block: only need to click left mouse and drag mouse, the green block can be canceled.

Note: If the plan of record time for all devices are the same, you only need to set one device, then click copy and save, then all devices enabled plan of record.

【General record length】

The default record length is 5 minutes in system setting for a single recording file.

The file can set 1-30minutes. Please refer to the picture in the right, modify length in general record length, and save it.



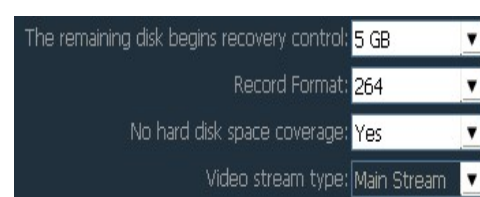
【Remaining disks recycling space】 The scope is 1G-50G optional, when disk space is less than set range, it will skip to another disk or delete earliest record file(default recycling is 5GB)

【Record format】 264 and AVI record formats. If record format is 264, you must use manufacturer's player to playback record.

【No hard disk space coverage】 Select "Yes", when all disk space is less than the set of disk space, it will delete the earliest record. Select "No", when all space is less than the set of disk space, it will stop recording.

【Video stream type】 Choose the video stream type, default is main stream (only in dual stream mode to take effect)

	Disk	Total size(G...)	Available si...	Path
<input type="checkbox"/>	C:\	29.315	24.390	C:\MediaRecord\
<input checked="" type="checkbox"/>	D:\	50.737	49.416	D:\MediaRecord\
<input type="checkbox"/>	E:\	52.729	50.922	E:\MediaRecord\
<input type="checkbox"/>	F:\	53.486	53.462	F:\MediaRecord\



【Record path】 After installed CMS, CMS will test the hard disk in device automatically, and display in the list, default to D disk.


Note: The CMS can support Max 24 drives, namely memory storage can connect Max 24 hard disk.

2.6.2. Alarm record

【Alarm duration time】 Alarm duration time, default is 10 seconds, selecting range is 5-60 seconds

【Pre-recorded alarm Length】 Pre-recording's length on alarm, default is 5 seconds, selecting range is 1-15 seconds.

2.6.3. Manual record

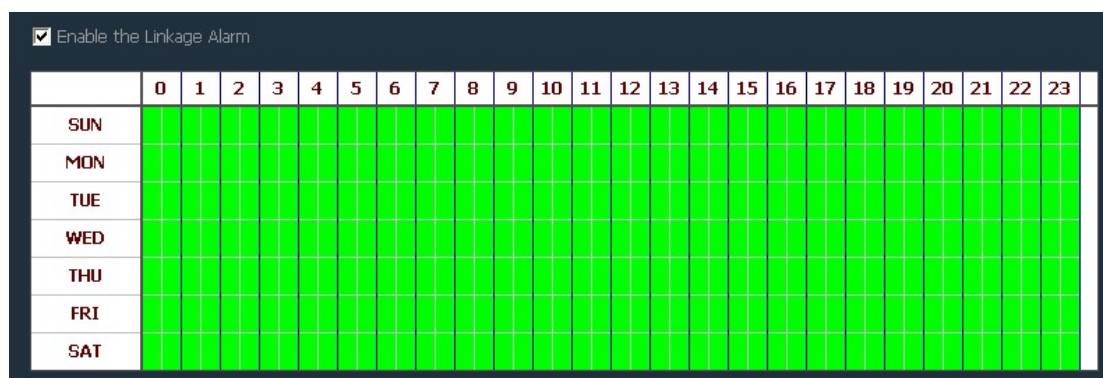
Firstly select window, then click  button or right-click window to choose recording. Please check plan of record to see record length and path setting.

The priority of record:

- 1、 If you have opened plan of record and alarm record at the same time, when producing alarm message during plan of record, the system will stop plan of record, and then produce linkage alarm record.
- 2、 If you have opened plan of record and alarm record, during linkage alarm record, starting manual record, the system will stop plan of record and alarm record, then produce manual record.

2.7. Linkage alarm

2.7.1. Enable the linkage alarm



In the tab bar to choose “setting”-- “Linkage record”—“Enable the linkage alarm”, as shown in above:

SUN – SAT means one week,based on the count of day ; 0 – 23 means one day, based on the unit of half an hour.

【Enable the linkage alarm】 Choose channel, then click the left mouse to drag a green blocks in the schedule, as shown in above; green area is the time bucket that enabled the linkage alarm.

【Close linkage alarm】 Cancel the tick in enable the linkage alarm, click save; or cancel green block in schedule and click save. The method of cancel green block: only need to click left mouse and drag mouse, the green block can be canceled.

2.7.2. Alarm type

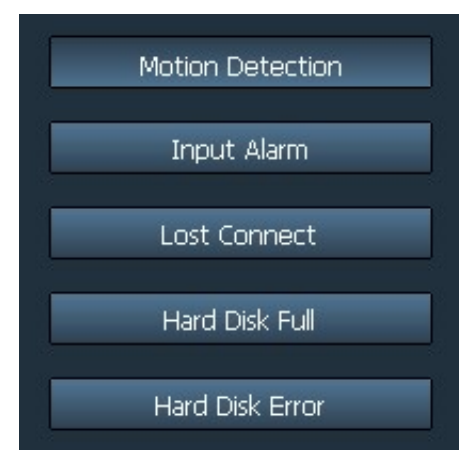
【Motion detection】 the device opening motion detection

【 Input alarm】 Alarm produced by the device opening Input alarm

【 Lost connect】 Alarm produced by the device disconnected

【Hard disk full】 Alarm produced by hard disk full

【Hard disk error】 Alarm produced by hard disk error



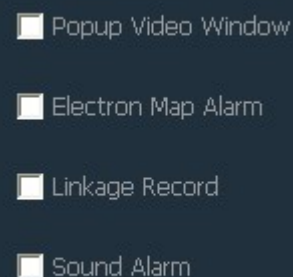
2.7.3. Linkage Alarm

【 Pop up Video Window 】 Tick means after the device producing alarm, it will Pop up window

【 Electron Map Alarm 】 Tick means after the device producing alarm, the device icon will flash on Electronic Map

【 Linkage Record 】 Tick means after the device producing alarm, it will record to local disk.

【 Sound Alarm 】 Tick means after the device producing alarm, the device will send out sound alarm.



2.8. Local playback

2.8.1. playback by time searching



Recording play button, when recording playback finished, click it continue to play.



stop playing button, when play recording, click it to stop playing.



Frame button, when play recording, click it to single frame play, click one time, it play one frame image.



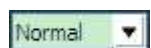
Image capture button, choose play window, click it to capture images to disk.



Electronic zoom in button, select the button in the process of play recording , then draw the magnified image region in the window.



Full screen button, choose this button, the window area will display on full screen, if need to display a single window on full screen, double click the window




When playback record, please select play speed through drop-down box, default is normal speed.



Voice button, you can choose whether open voice during playing record, default is closed.



Jump button, after selected time point, clicking  during record playback, the image will jump to the set time directly, then start playing.

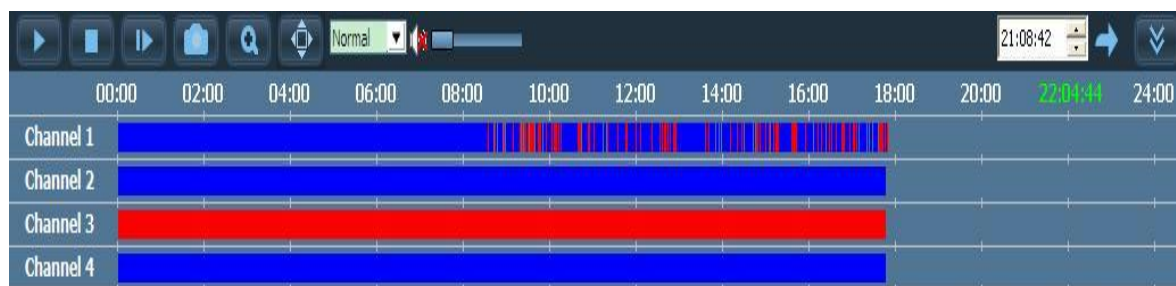
【record playback retrieval】

Step 1: choose the Record file format and search time

Step 2: select the windows that need to playback, and select channel in list tree.

Step 3: If there has files match the condition in time scope, it will display on time line panel.

Step 4: double-click the device channel to playback record.



Plan of record: ■

Alarm record: ■

Manual record: ■

Note: when the mouse moves on the time line, the time line panel will display the current location of the time point, clicking to know the precise position of the record; Right click the time line panel, the time line panel will display from 24 hours to 2hours, enlarging the time point effectively.

2.8.2. Playback by searching file

- Step 1: Choose the record file format and device channel
- Step 2: Select the search time and click “search” button, the system will display the eligible record file in the device tree.
- Step 3: Select playback window and double click record file to playback record.


File playback support the same record file playback in four windows at the same time.


2.9. Remote playback


2.9.1. Remote playback plan of record

The client must support remote playback. Please refer to 2.1.4 remote playback setting of opening remote paly back.

Remote playback can play videos from other CMS, the specific operation as below:





Click  to enter remote playback interface, right-click the mouse on the left list, it will appear management server menu, as shown in picture, then click the management server button, enter into remote server Settings menu.

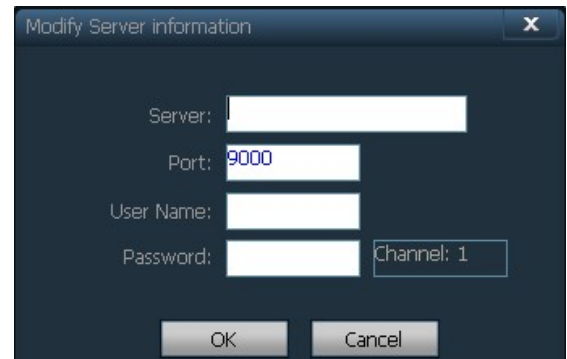
Double click any column, enter into the editing server items.

设置		
序号	服务器	端口
1		
2		
3		
4		
5		
6		
7		
8		
9		
10		
11		
12		
13		
14		
15		
16		

IP Camera CMS user manual

Input the address of the server, the user name and password.

*The setting of port, user name and password must keep the same as the server Settings. (the default port is 9000, user name and password are the same as CMS account and password)

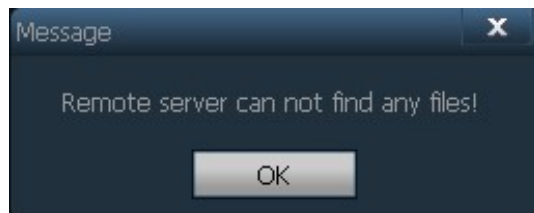
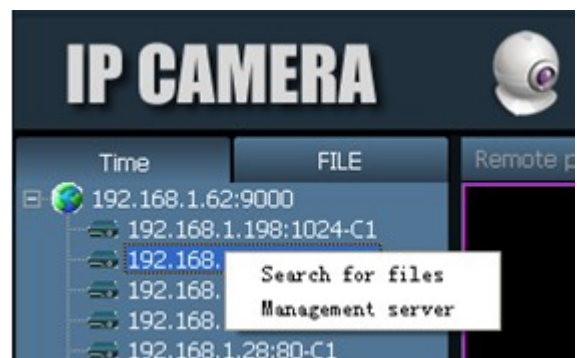


Click OK, then back

to the left list, you can see a new server.

Right click the corresponding server, choose “connect to the server” to log in.

After login server successfully, it will appear device list on server, choosing the date on server, then right click the device, choosing “search file” to start the recording.



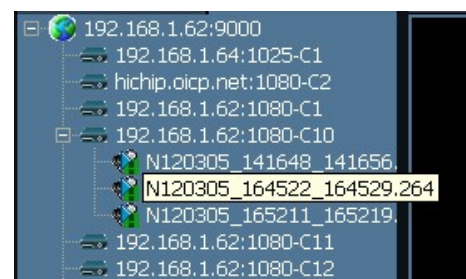
If appearing the above reminder, it indicates there is no relevant recordings on server in this day. If no reminder, you can drag the device into channel to play by time.

Playing by time

with the same way as playing by time in above. In sequence: login server – search server

file – drag or double click the file to play.

Playing by file only can play one file, after completion of play, it can not play the next file.



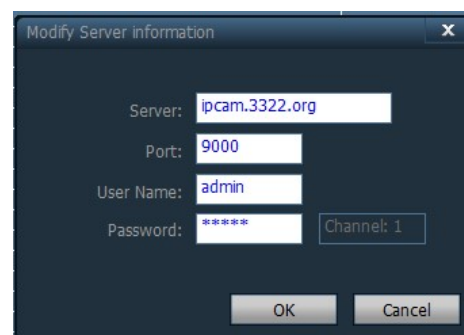
2.9.2. SD card record playback

It can remote playback the timing

recording or alarm recording in SD Card

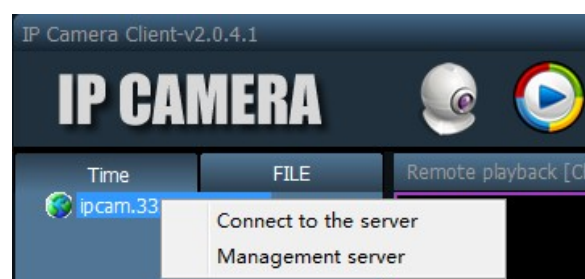
Input the address or domain of the camera, user name and password.

* The setting of port, user name and password must keep the same as the camera Settings. (port, user name and password are the same as the camera)



Click OK, then back

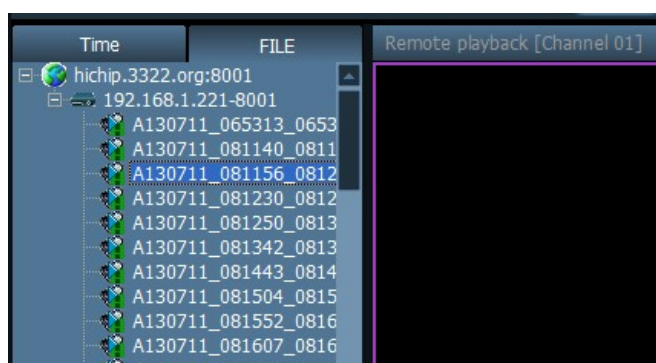
to the left list, you can see a new server. Right click the corresponding server, choose "connect to the server" to log in.



After login server successfully,

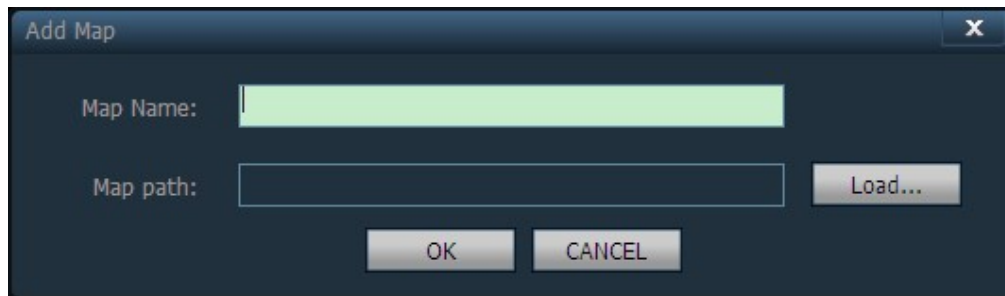
it will appear device list on server, choosing the date on server, then right click the device, choosing "search file" to start retrieving the recordings on server.

Playing by time with the same way as playing by time in above.



2.10. Electronic Map

2.10.1. Add Map




Step 1: click "add map" in the map page or right-click mouse to choose "add a new map"

Step 2: input name in the pop-up dialog box "map name", and then import the map


Step 3: click "OK", the map is added to the CMS

2.10.2. Edit Map

Step 1: click the "edit map" button on the map, or right-click to choose edit maps

Step 2: drag the device channel to the map, the device will display  on the map, double-click this icon can see device image (note: if you want to see the camera image on the map, the camera must be connected in the preview)

Step 3: after editing the map, click "stop editing " button

After editing the map, you need to open the "Electronic map alarm" function in device linkage alarm, otherwise  will not flash when device alarm.

2.10.3. Delete Map

Choosing the map name, then click "delete map" button to delete the map

2.11. Parameter settings

Before modifying device parameters, please click the device that need to modify parameter in the parameter setting page. Double click the channel in device tree, then it can display images in right image frame.

2.11.1. Color

【Brightness】 Drag the slider can change the brightness of the image

【Saturation】 Drag the slider can change the image of the saturation

【Contrast】 Drag the slider can change the contrast of the image

【Hue】 Drag the slider can change the hue of the image

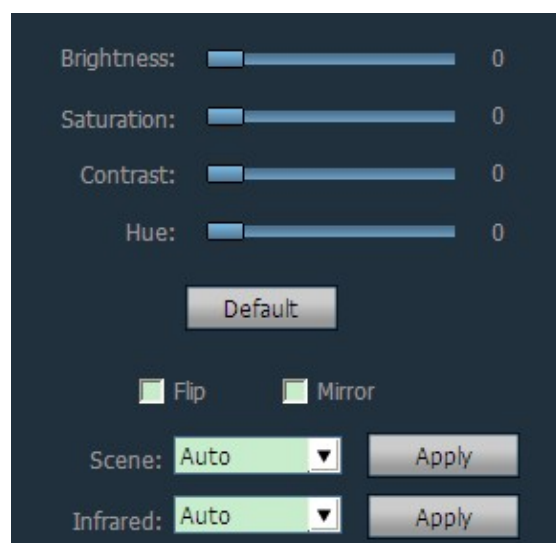
【Default】 Click the default button, color image will restore to default

【Flip】 After ticking, the image will flip(device support required)

【Mirror】 After ticking, it will have mirroring image(device support required)

【Scene】 White balance: auto, indoor and outdoor three modes, the default is auto white balance (equipment support required)

【Infrared】 Night vision: automatic on, manual on two modes, the default is auto on (device support required)



Note: if the device does not support these function, the corresponding function cannot be modified

2.11.2. Video

【Stream type】 The stream type has main stream and sub stream

【Resolution】 Different models have different resolution

【Frequency】 Frequency is 50 HZ and 60 HZ, the default is 50 HZ

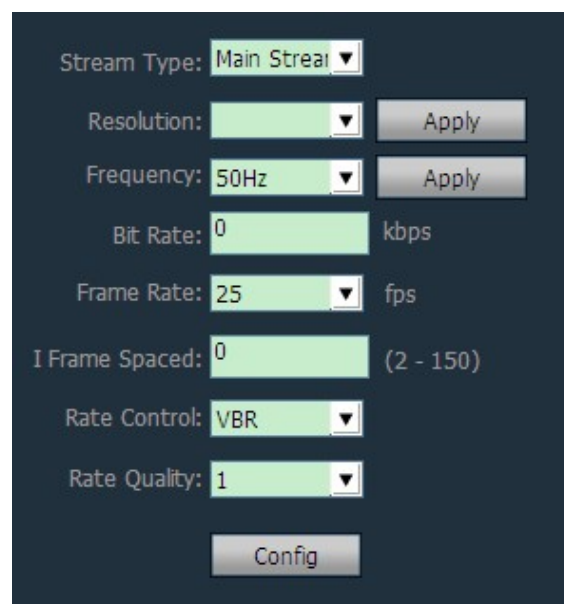
【Bit rate】 Different models have different bit rate

【Frame rate】 For NTSC system machine or 60 HZ machine, the frame is 1 ~ 30 fps; For PAL system machine or 50 HZ machine, the frame is 1 ~ 25 fps.

【I frame Spaced】 the image interval between two I frame

【Rate control】 The Rate control has VBR and CBR.

【Rate quality】 The Rate quality has 6 grades, the smaller the grade, the better the image quality; the bigger the grade, the worse the image quality.



2.11.3. Audio

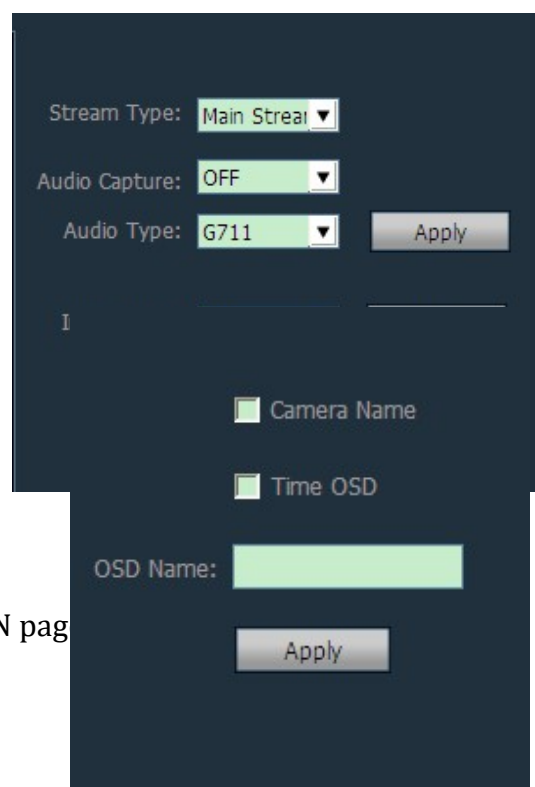
【Stream Type】

The stream type has main stream and sub stream

【Audio Capture】 On and off

【Audio Type】 G.726 and G.711

【Input Mode】 Mike input and linear input



2.11.4. OSD

【Camera Name】 Ticking means overlay name on screen display

【Time OSD】 Ticking means overlay time on screen display

【OSD Name】 Inputting OSD name and clicking “apply”to modify the OSD name.

OSD name can support maximum nine Chinese characters.

2.11.5. Network

Please configure network

parameters according to the actual situation. No matter the device opened set the IP manually or obtain IP by DHCP, the CMS only shows the current IP of this device.

2.11.6. Motion Detection

Set the motion detection:

Step 1: Ticking in front of the Area, it will display a green box on the left image.

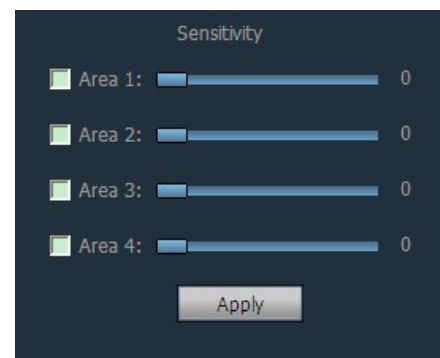
Step 2: drag the green box to the fitable position, and set up the size of green box

Step 3: set the sensitivity of alarm area, the range is 0 ~ 100, default is 50. The greater the sensitivity value, the higher the sensitivity; the smaller the sensitivity value, the lower the sensitivity

Step 4: click "linkage alarm" and select the type of alarm

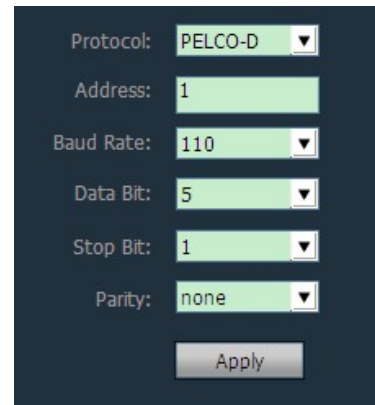
(pop up video Window, electronic alarm, linkage record and sound alarm)

Step 5: open the linkage alarm of the corresponding device, if you do not open alarm linkage function of the device, it will not be able to generate linkage alarm



2.11.7. PTZ

Different PTZ with different protocol, address and baud rate. You can control the PTZ to rotate after setting correct protocol, address and baud rate.

A screenshot of a PTZ configuration interface. It features a dark blue background with white text. The settings are as follows: Protocol is set to 'PELCO-D' in a dropdown menu; Address is '1' in a text field; Baud Rate is '110' in a dropdown menu; Data Bit is '5' in a dropdown menu; Stop Bit is '1' in a dropdown menu; and Parity is 'none' in a dropdown menu. An 'Apply' button is located at the bottom right.

2.11.8. System

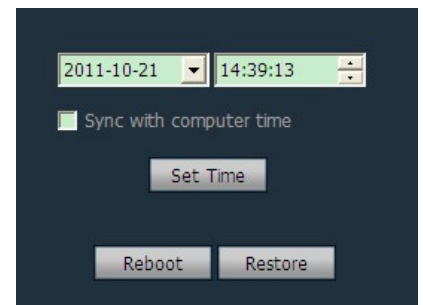
After choosing time, click the "set time" button, you can change the time

【Sync with computer time】 Ticking and clicking “set time”,

then the time of this device will synchronization with computer time.

【Reboot】 After clicking the reboot button, the device will restart

【Restore】 After clicking Restore button, the device will restore to factory setting. You need to restart configuration IP of the device to reconnection.

A screenshot of a System configuration interface. It shows a date '2011-10-21' in a dropdown and a time '14:39:13' in a text field. Below these is a checkbox labeled 'Sync with computer time' which is checked. A 'Set Time' button is positioned below the checkbox. At the bottom, there are two buttons: 'Reboot' and 'Restore'.

2.11.9. WIFI

RSSI	SSID	WPA Alg...	Securty ...	Wifi Mode	Channel
68	CMCC	TKIP	None	Infrast...	1
68	CMCC-AUTO	AES	WPA2...	Infrast...	1
37	ChinaNet-WzPU	TKIP	WPA-...	Infrast...	2
47	dlink-sun	TKIP	WEP	Infrast...	3
57	Yakumo	TKIP	WEP	Infrast...	6
100	linksys	TKIP	WPA2...	Infrast...	7
99	HX wifi	AES	WPA2...	Infrast...	12

Search

☒ Enable Wifi

SSID: linksys

Wifi Mode: Infrastructure

Securty Mode: WPA2-PSK

WPA Algorithm: TKIP

Key: *****

Re-type Key: *****

Check Wifi Apply Cancel

the step of setting WIFI:

Step 1: Select enable WIFI, click search WIFI signal

Step 2: Double-click the SSID of WIFI using

Step 3: Input WIFI password key

Step 4: Click “setting” button, then click check WIFI, restart the device

2.12. User management

The factory default administrator user of the device is admin, password is empty. After log in by administrator, he can add user, delete user and set user permission. User permission has three types: admin, user, guest.

Admin permission: can undertake device management, user management, video surveillance, record playback, map Settings, log query, switch users and exit from the client

User permission: can undertake video surveillance, video playback, map Settings, log view, switch users and modify password

Guest permission: can undertake video surveillance, switch user and modify password

Users	Permissions
admin	admin

Information

User Name:

Password:

Confirm Password:

Permissions:

Add Modify Delete Save Cancel

2.12.1. Add User

Step 1: After log in by admin permission, select "Settings" in the TAB bar -- "user management"

Step 2: Click "add" button, enter the user name, password and select user permission

Step 3: Click "save" button, the user added successfully

2.12.2. Delete User

Step 1: After log in by admin permission, select "Settings" in the TAB bar -- "user management"

Step 2: Choose to delete the user, and click "delete" button

2.12.3. Modify user permissions

Step 1: After log in by admin permission, select "Settings" in the TAB bar -- "user management"

Step 2: Select the user and click "edit" button

Step 3: Select the user permission and click "save" button

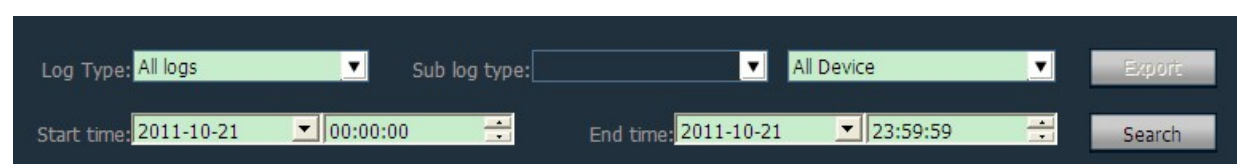
2.12.4. Modify user password

Step 1: In the TAB bar, select the "Settings" -- "user management"

Step 2: Select the user and click "edit" button

Step 3: Enter a new password and click "save" button

2.13. Logs



The screenshot shows a log query interface with the following elements:

- Log Type:** A dropdown menu currently set to "All logs".
- Sub log type:** A dropdown menu currently set to an empty state.
- All Device:** A dropdown menu currently set to "All Device".
- Export:** A button to export the logs.
- Start time:** Two dropdown menus for date and time, currently set to "2011-10-21" and "00:00:00".
- End time:** Two dropdown menus for date and time, currently set to "2011-10-21" and "23:59:59".
- Search:** A button to search for logs.

Log type

【All logs】 Record all information of system

【System log】 Record the user login, exit, and user configuration, etc

【Operation log】 Record all operation information from users

【Alarm log】 Recording device alarm information

2.13.1. Log retention time

Step 1: In the tab bar, select the "Settings" -- "other Settings"

Step 2: Select time in log retention time, one month, two month, three month, six month optional, and click "save" button

2.13.2. Log query

Step 1: Select a log type and sub log type

Step 2: Choose the device to view log, default is all devices

Choose the start time and end time of querying log and click "search" button

2.13.3. Log backup

Step1: Select a log type and sub log type

Step 2: Choose the device to view log, default is all devices

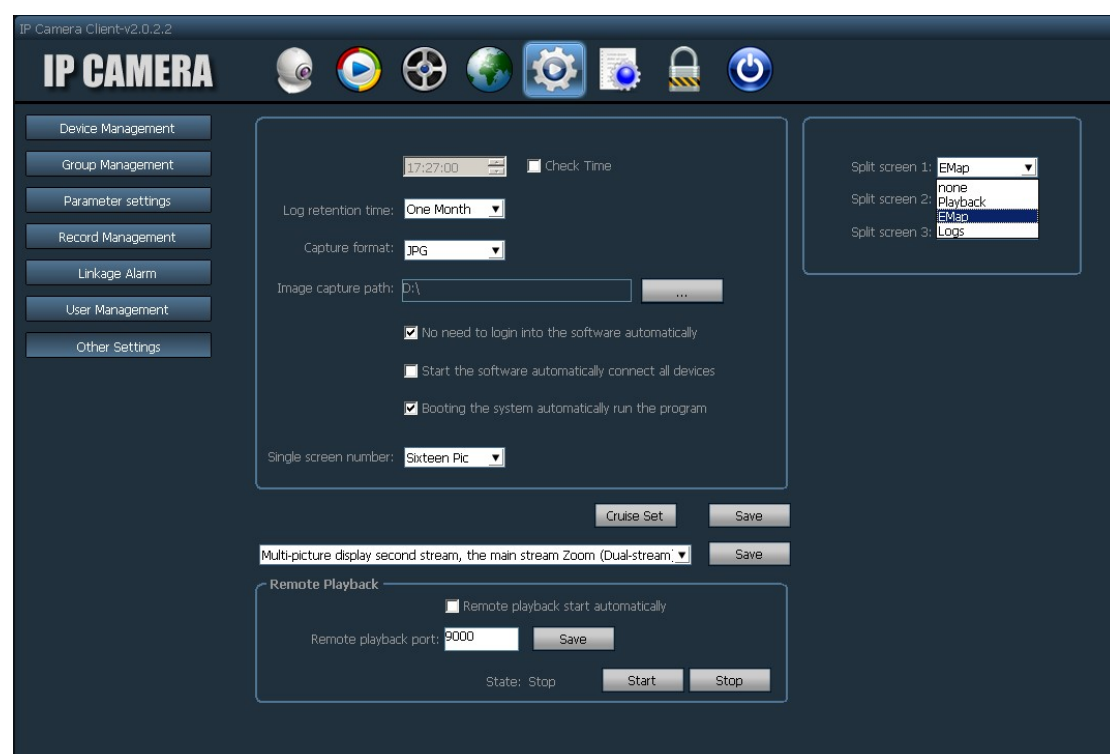
Step 3: Choose the start time and end time of querying log and click "search" button

Step 4: Click the "export" button, and choose the path of backup

Note:

- 1. When backup log, you must search log firstly, then backup.**
- 2. The export log format is Excel format.**
- 3. Each excel table only can save 5000 pieces log, if the quantity exceed 5000, the left log will form another excel table, and so on.**

2.14. Other settings



【Check time】 Ticking means the CMS check time for all connected devices on CMS in specific time, namely device time synchronization to PC time

【Log retention time】 It has a month, two months, three months, six months four options, the CMS logs in the set period of time can not be deleted.

【Capture format】 It refers to the CMS captured image format, capture format: JPG and BMP available. You can set the format when popup image preview during capturing.

【Image capture path】 It refers to the CMS capture save path

【Overlay OSD】 Overlay the channel name of the camera to display on the left bottom corner

【Booting the system automatically run program】 When start Windows, it uploads monitoring software automatically. If you don't choose, it doesn't start.

【Single screen number】 It can set maximum number of single screen: 16 pictures, 25 pictures, 36 pictures (need to restart the software to work)

【Multi-picture display second stream,the main stream zoom】 You can monitor multi-picture after selected this option. 1 and 4 image segmentation show the main stream; When in 6 and 8 image segmentation, only the first picture shows the main stream, other shows sub stream (the largest image segmentation is the first picture); when double-click to magnify a picture, it shows the main stream

【Show only the connection of each video stream】 After selecting this option, no matter how many image segmentation on CMS, all connecting main stream or sub stream or third stream

【Save】 Modify the parameters, then click "save" button, thus can take effect.

【Export parameters】 Export all set parameters from CMS (backup all configuration parameters)

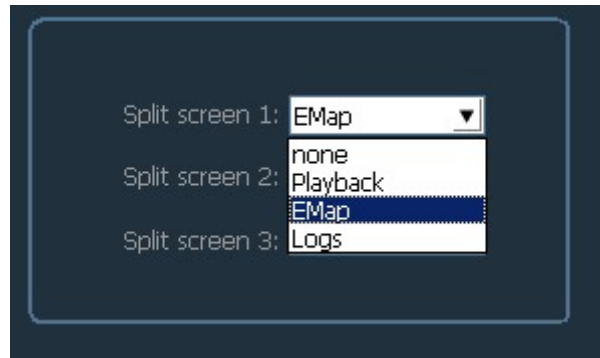
【Import parameters】 import all exported setting parameters to another CMS, restore all configuration parameters (the version of two CMS must keep the same, otherwise it may occur exception.)

【Rebuild video index】 Delete the video database index file, rebuild video database index file

【Cruise set】 set the preset position of starting cruise

【Remote playback port】 the remote playback port of the device. You need to start the port when remote playback (the default port is 9000)

2.15. Split screen



- The CMS support standalone PC connecting four display screen, one main display screen and three sub display screen
- The main screen display main interface of the CMS; sub screen can display “playback”, “electronic map”, “log”; before setting the sub display screen, you need to set the video card displaying multi-screen on PC
- After setting split screen, click save, then restarting the CMS, the Settings can take effect;